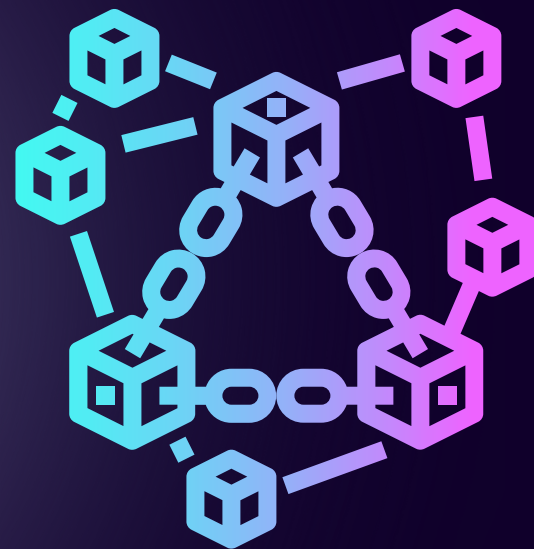


# METUS

## SocialFi Network

Metus is a community-run SocialFi Network, where each participant can easily monetize their data, and get rewarded for activity.





# THE PROBLEM

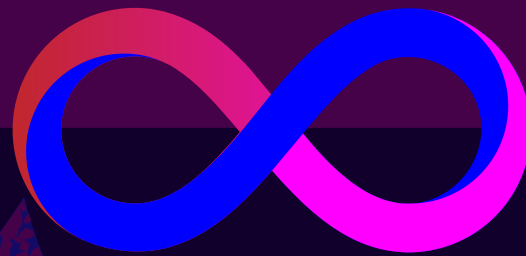
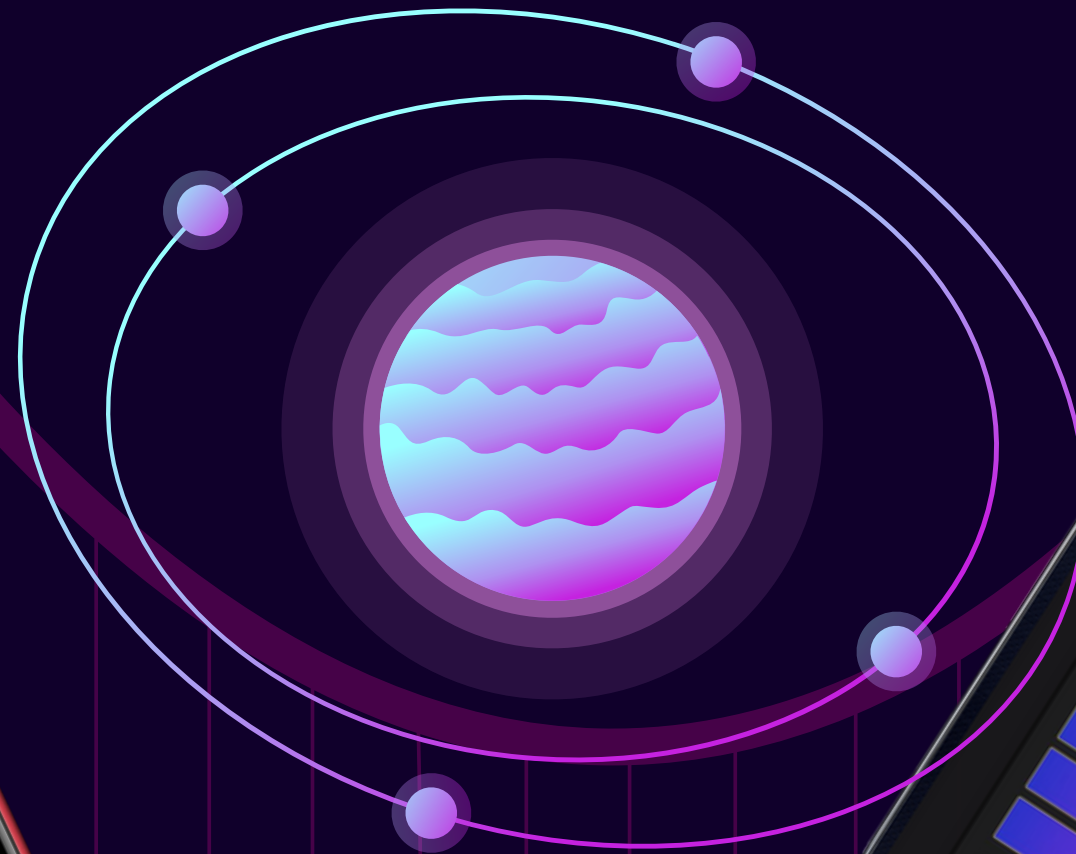
*Every day, over half the world's population, spends an average of **2 hours and 27 minutes** on social media; however, the attention, interactions, engagement, and generated data are monetized by a few centralized entities and their shareholders.*

*The current social media landscape is referred to as **Web2** – a platform where users are the product, content is king, and centralization is the norm.*





# Bridging The Gap Between Web2 & Web3







# Core Features

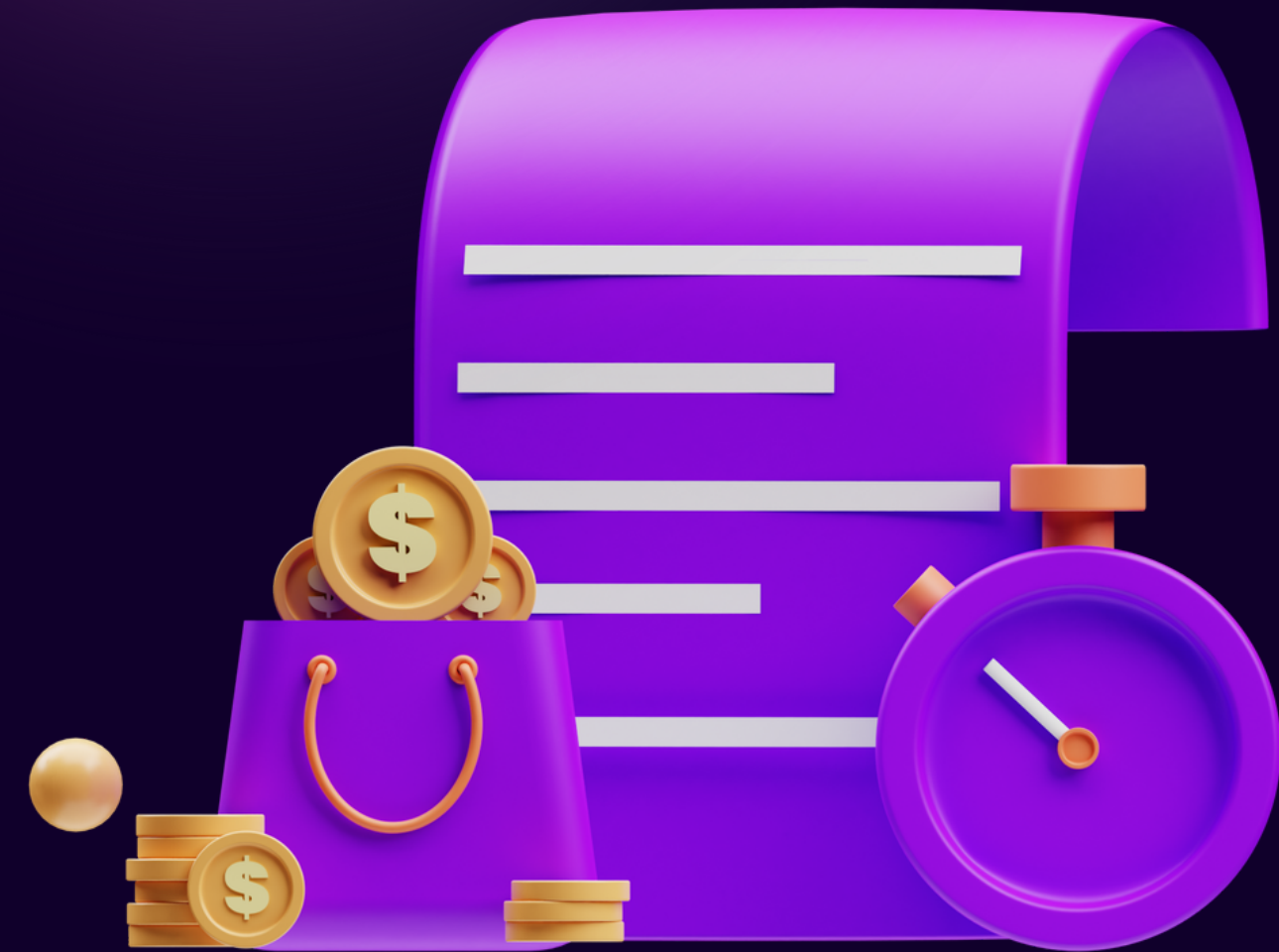
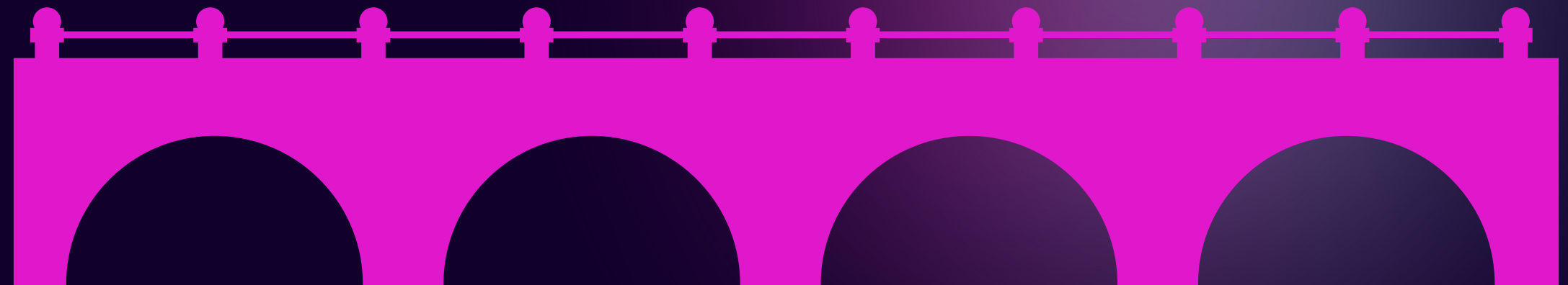
MONETIZATION STREAMING SUBSCRIPTIONS

CRYPTO DONATIONS BUSSINES PAGES ADS

LOCKED CONTENT ECOMMERCE AI TOOLS

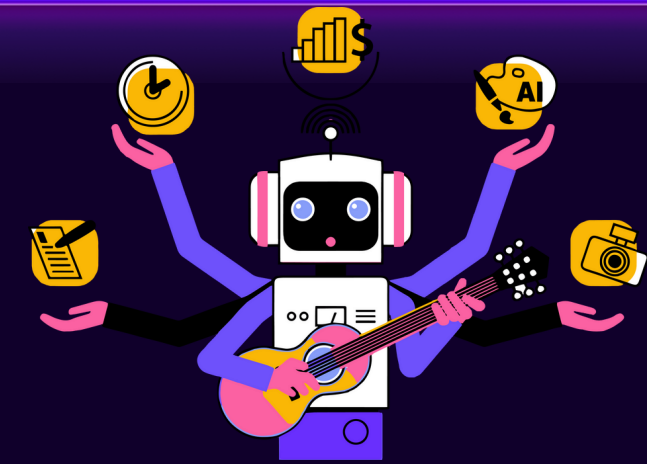
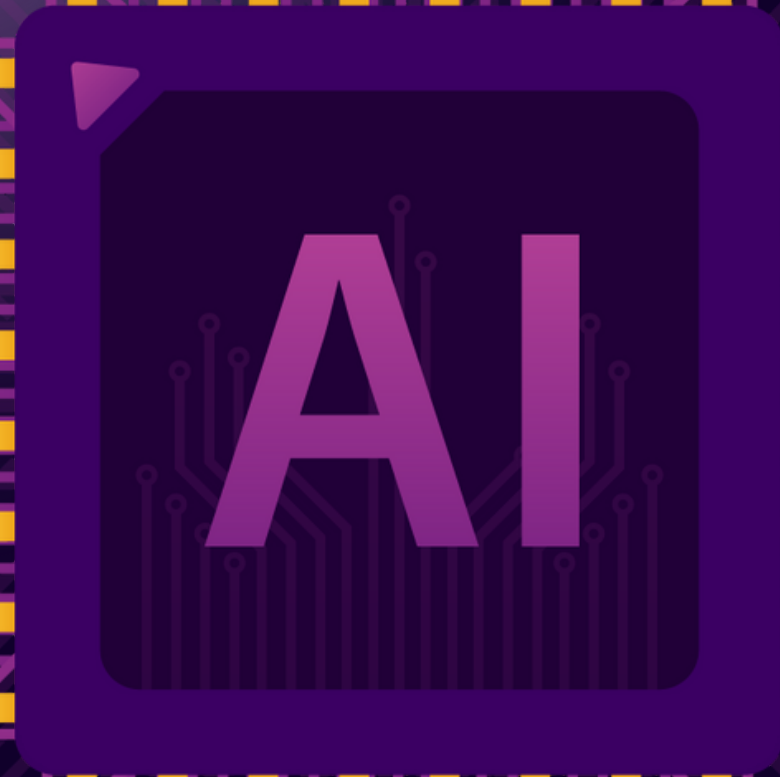
# METUS

Bridging The Gap Between Web2 & Web3





# Powerful AI Tools For Social Media



**TEXT-2-VIDEO**



**TEXT-2-IMAGE**



**TEXT-2-SPEECH (CUSTOM VOICES)**



**SPEECH-2-TEXT (CUSTOM VOICES)**



**40+ CUSTOM MODELS FOR SOCIAL MEDIA**



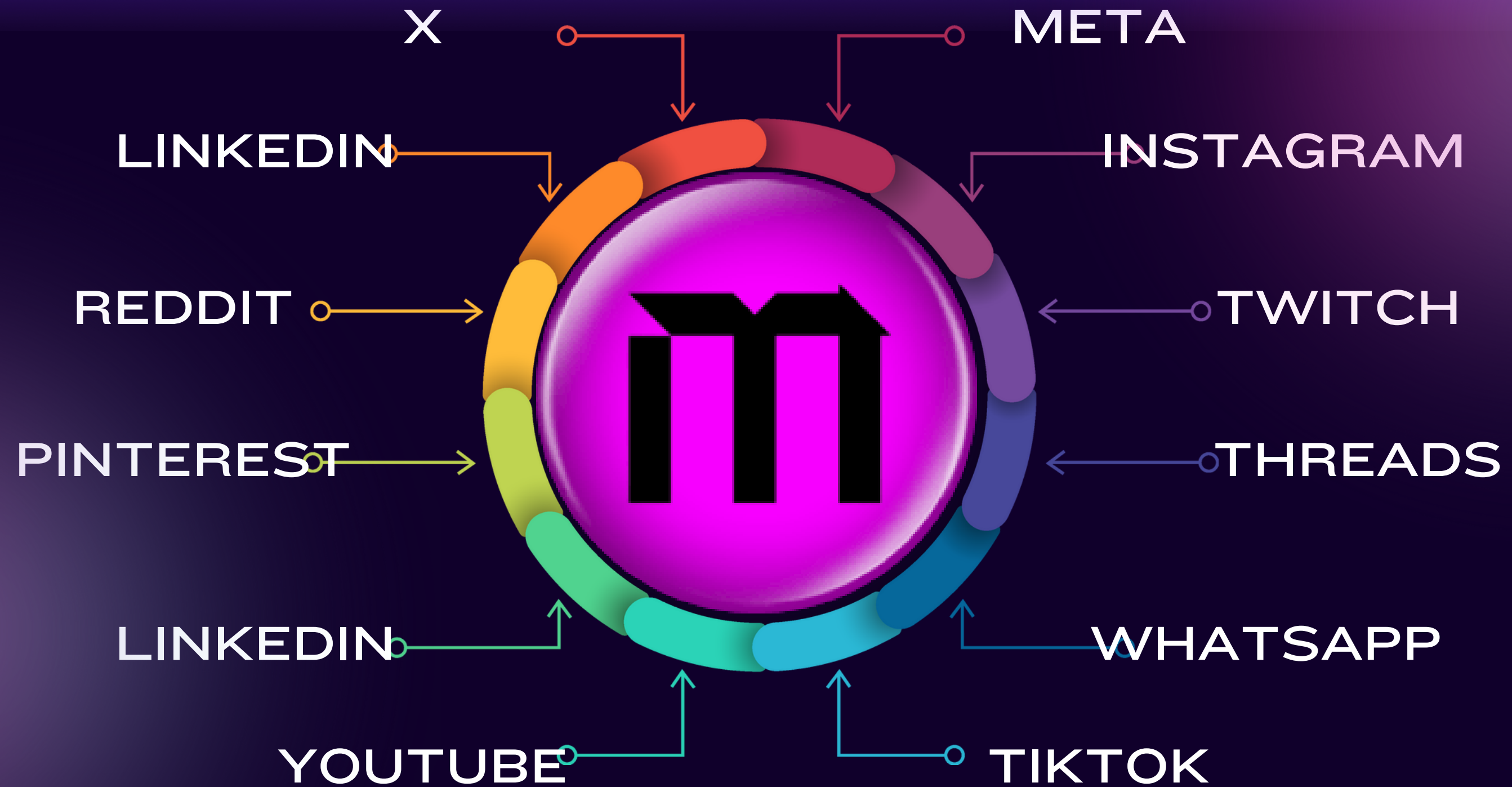
**GENERATE CODE (FOR DEVELOPERS)**



**20+ CHAT ASSISTANTS**



# ALL-IN-ONE APP





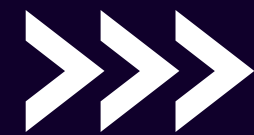
# How To Get Monetized ?

The key ideological trigger for the development of **SocialFi** was the emergence of the concept of creative earnings: anyone can earn money by attracting an audience and creating both professional and non-professional content.



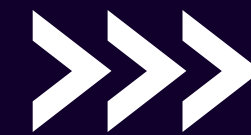
## Easy registration

grow your network



## Create content

posts/comments/like



## Collect rewards

every activity is rewarded