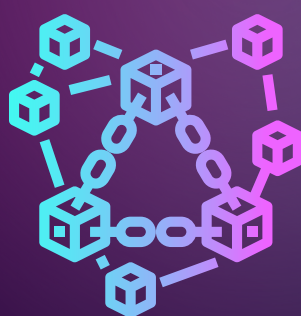


METUS

SocialFi Network



Metus is a community-run SocialFi Network, where each participant can easily monetize their data, and get rewarded for activity.



THE PROBLEM

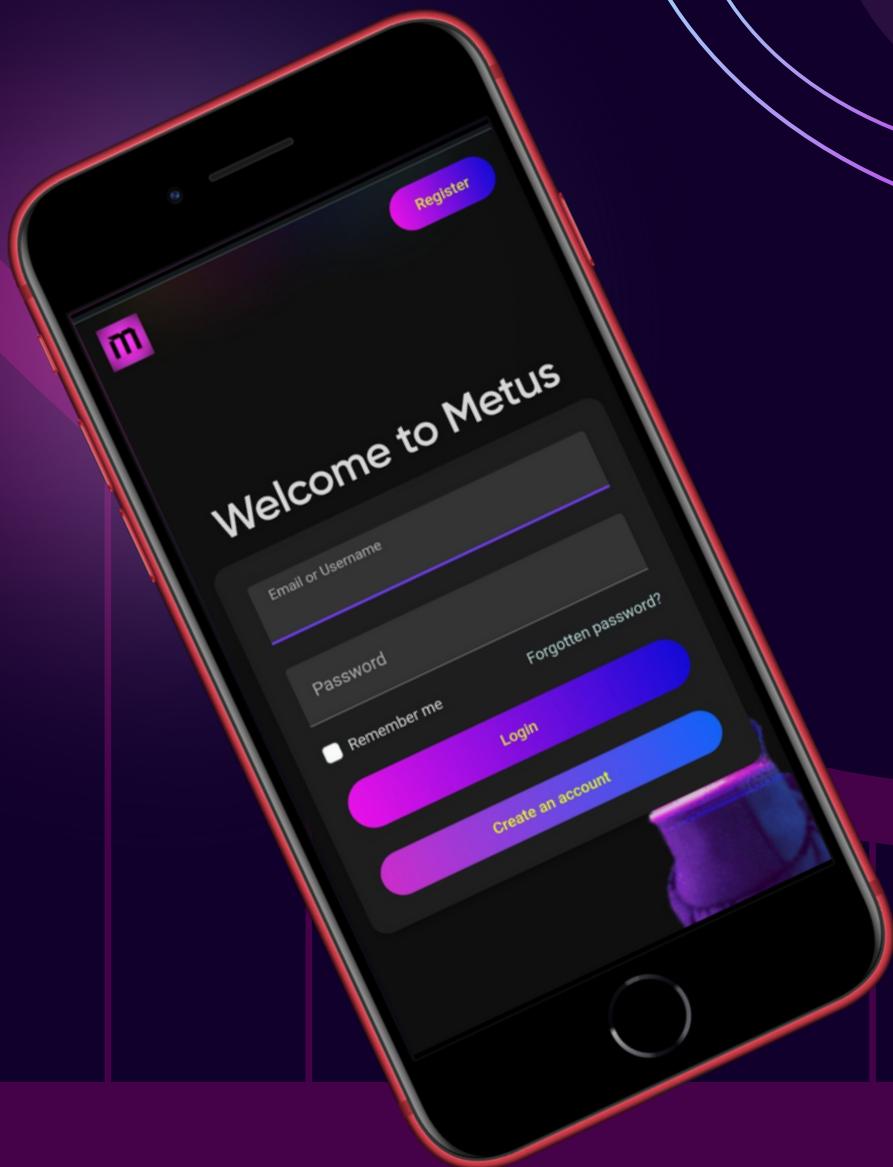
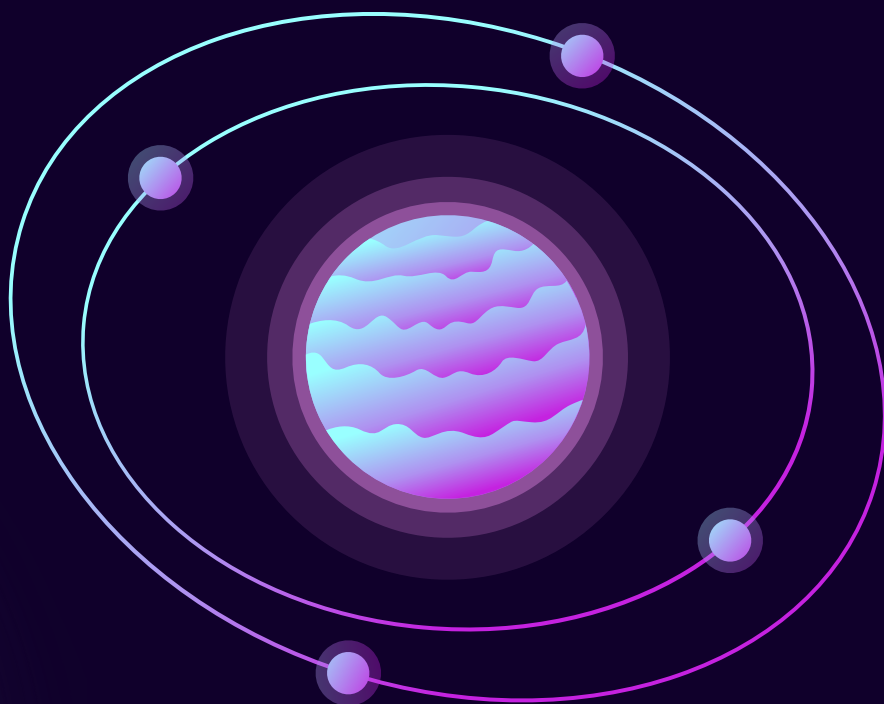


Every day, over half the world's population, spends an average of **2 hours and 27 minutes** on social media; however, the attention, interactions, engagement, and generated data are monetized by a few centralized entities and their shareholders.

The current social media landscape is referred to as Web2 - a platform where users are the product, content is king, and centralization is the norm.



Bridging The Gap Between Web2 & Web3



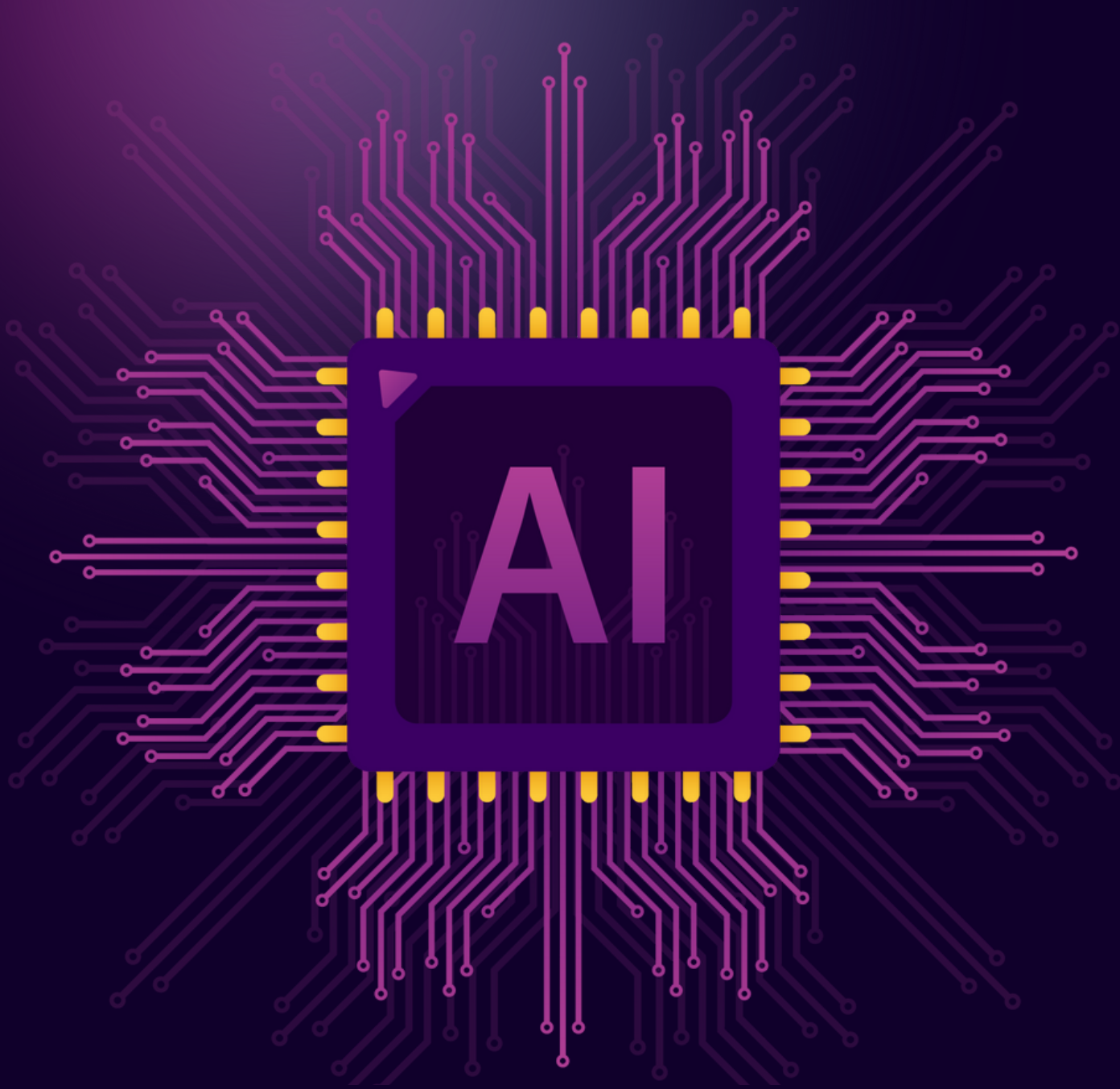
METUS

Core Features

- MONETIZATION
- STREAMING
- CRYPTO DONATIONS
- WALLET
- BUSINESS PAGES
- LOCKED CONTENT
- AI TOOLS
- ADS
- ECOMMERCE MARKETPLACE



Powerful AI Tools For Social Media



TEXT-2-VIDEO



TEXT-2-IMAGE



TEXT-2-SPEECH (CUSTOM VOICES)



SPEECH-2-TEXT (CUSTOM VOICES)



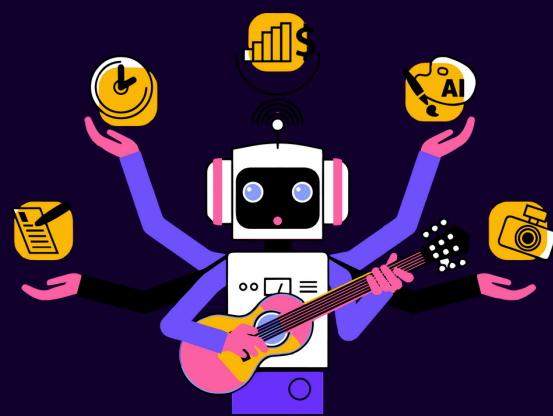
40+ CUSTOM MODELS FOR SOCIAL MEDIA



GENERATE CODE (FOR DEVELOPERS)



20+ CHAT ASSISTANTS



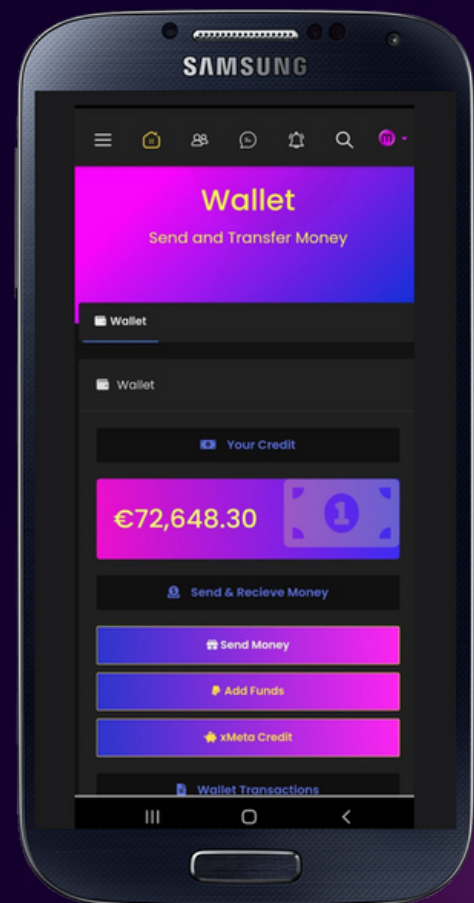
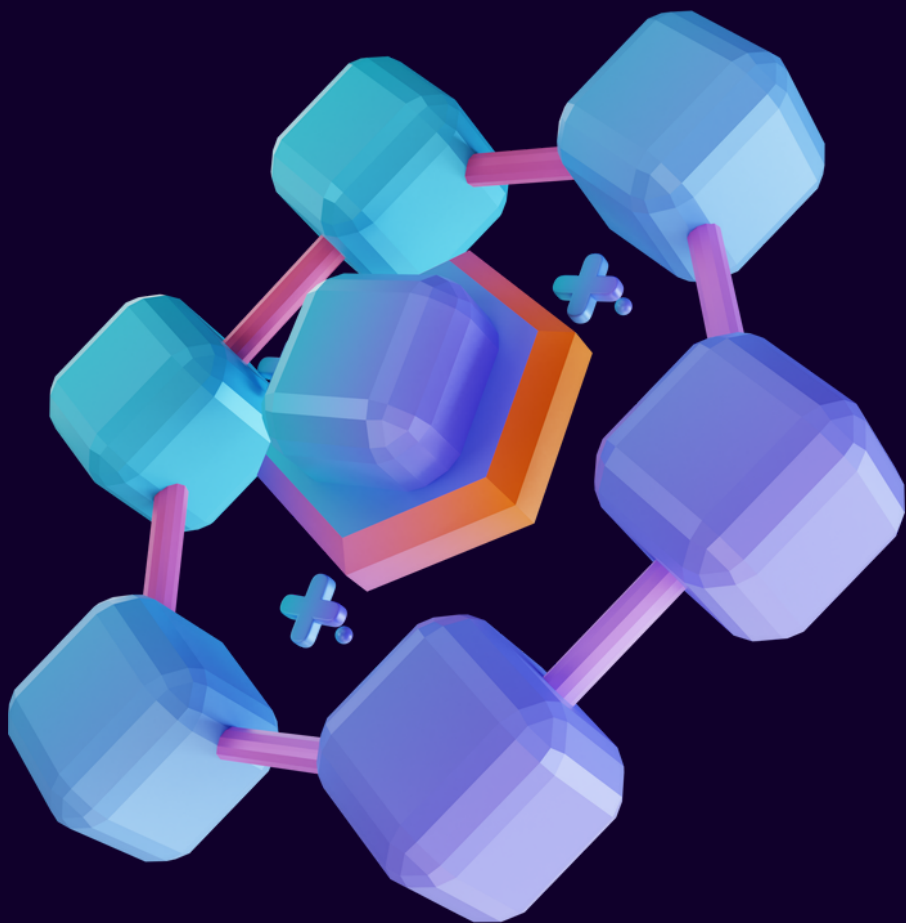
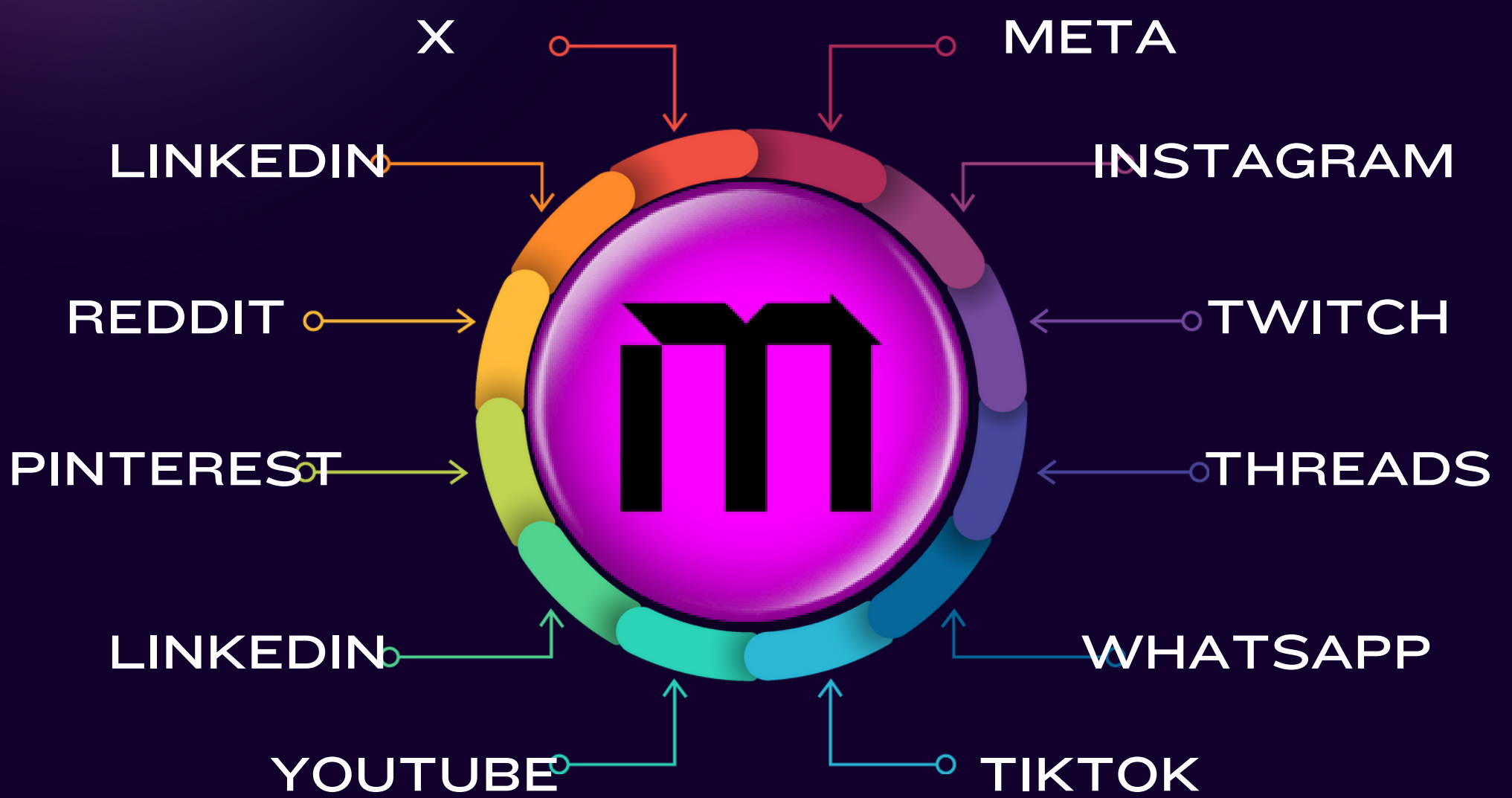
ECOMMERCE

Buy or sell products or services

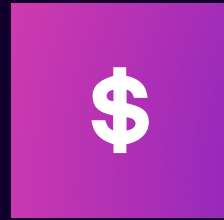
- digital products
- services
- physical products
- tracking code
- custom store
- issue invoices & tax



ALL-IN-ONE APP



How To Get Monetized ?



Easy registration

grow your network

Create content

posts/comments/like

Collect rewards

every activity is rewarded

The key ideological trigger for the development of SocialFi was the emergence of the concept of creative earnings: anyone can earn money by attracting an audience and creating both professional and non-professional content.